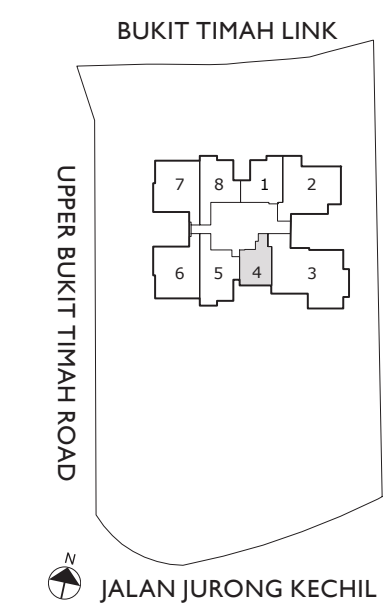
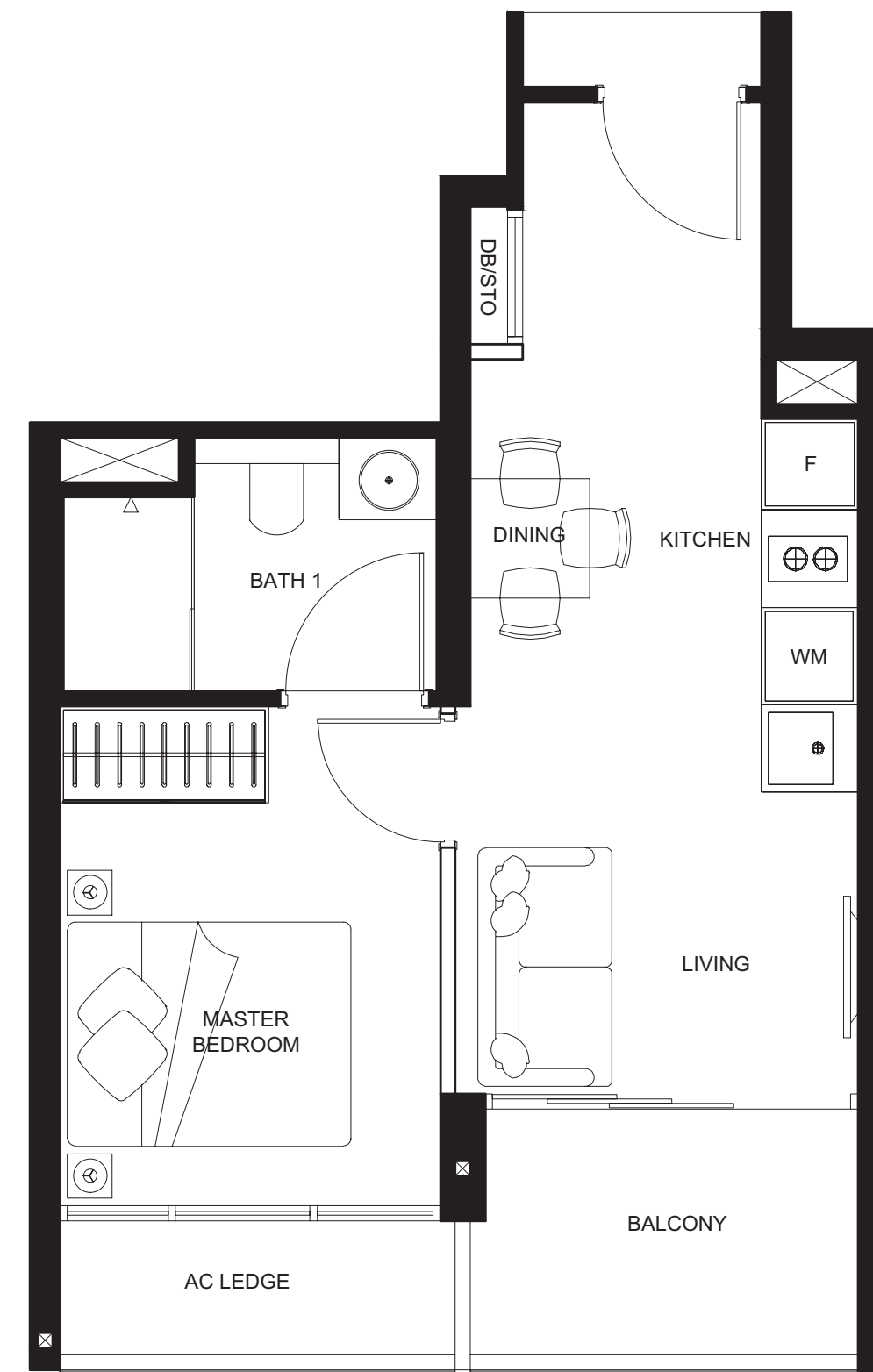


# 1-BEDROOM

TYPE A

#06-04 - #20-04

40M<sup>2</sup>

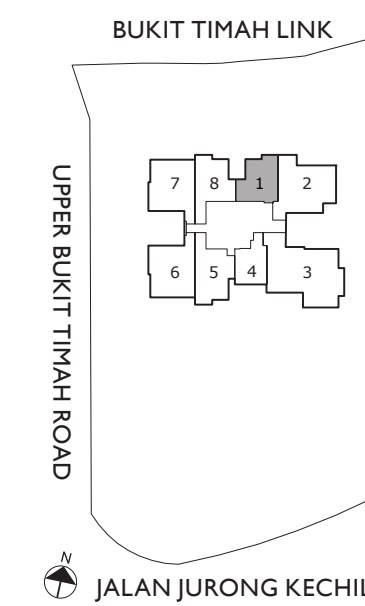
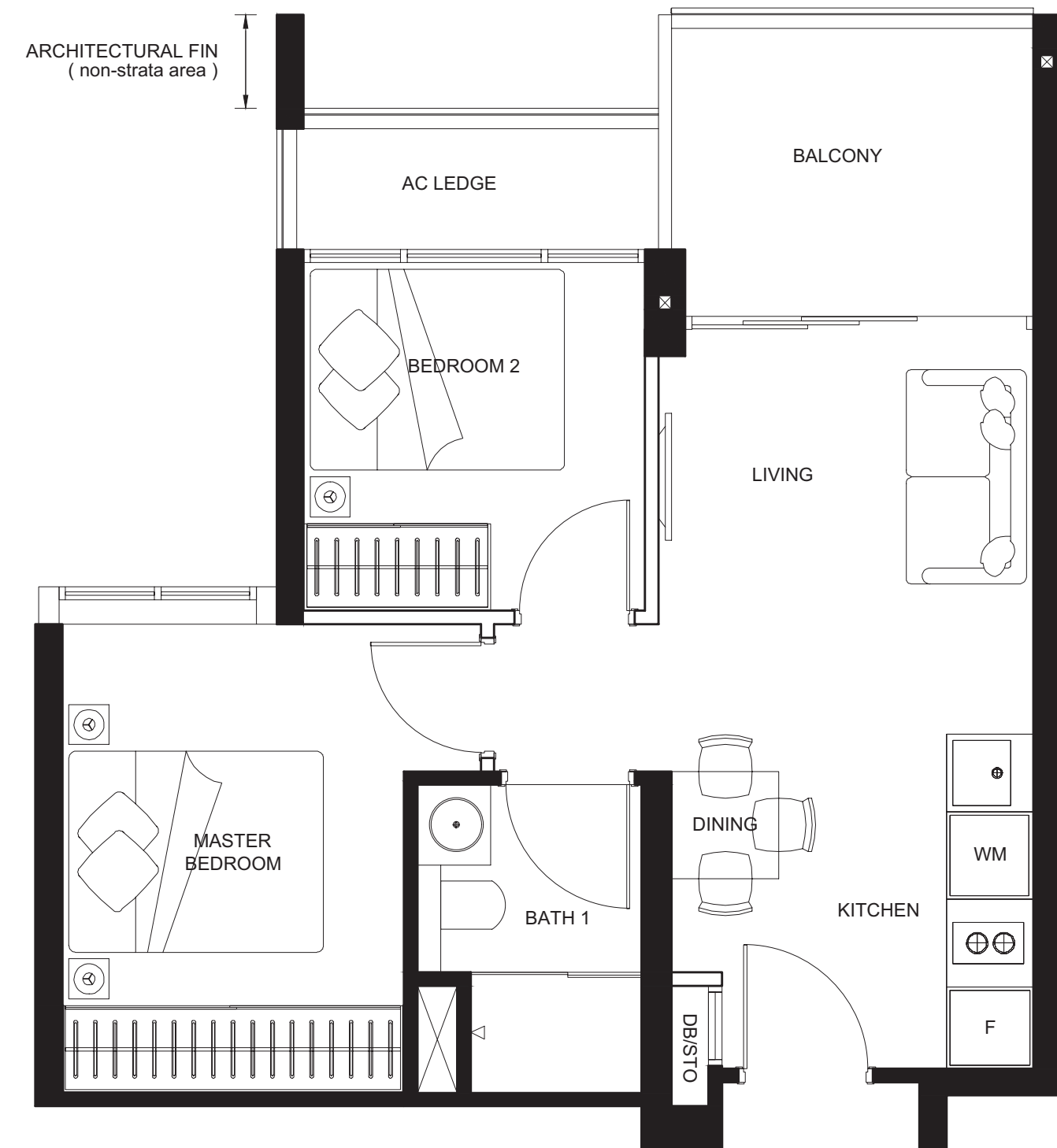


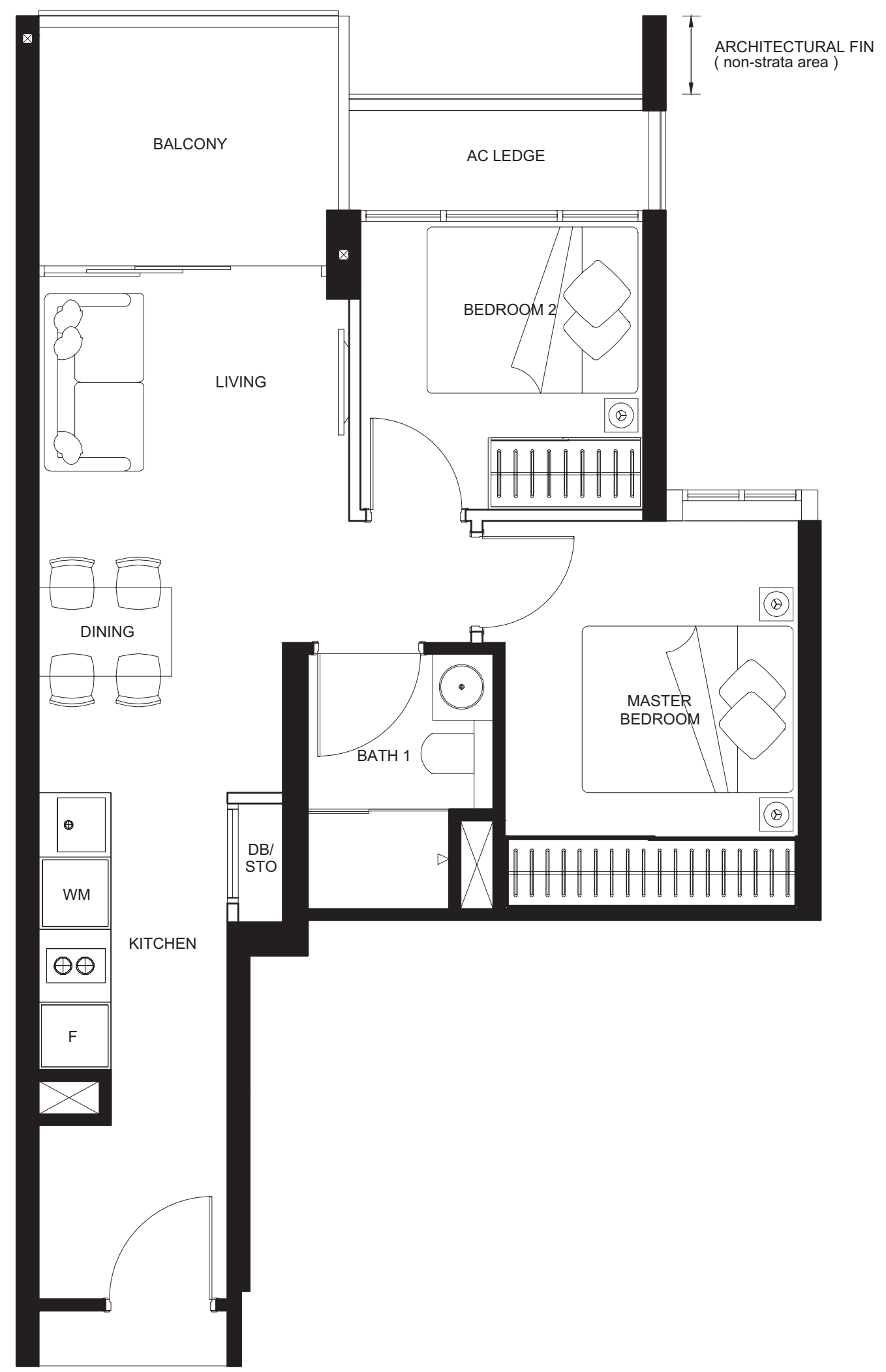
# 2-BEDROOM

TYPE B1

#06-01 – #20-01

51M<sup>2</sup>



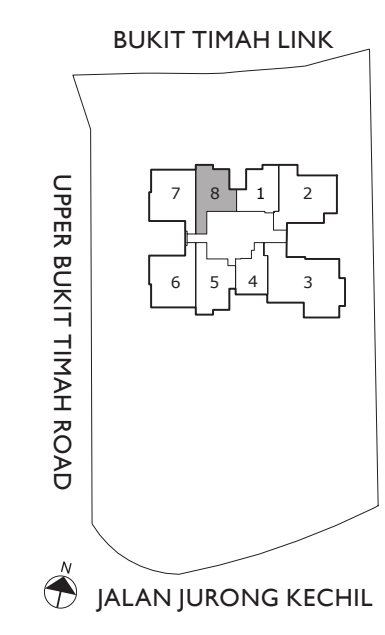


# 2 -BEDROOM

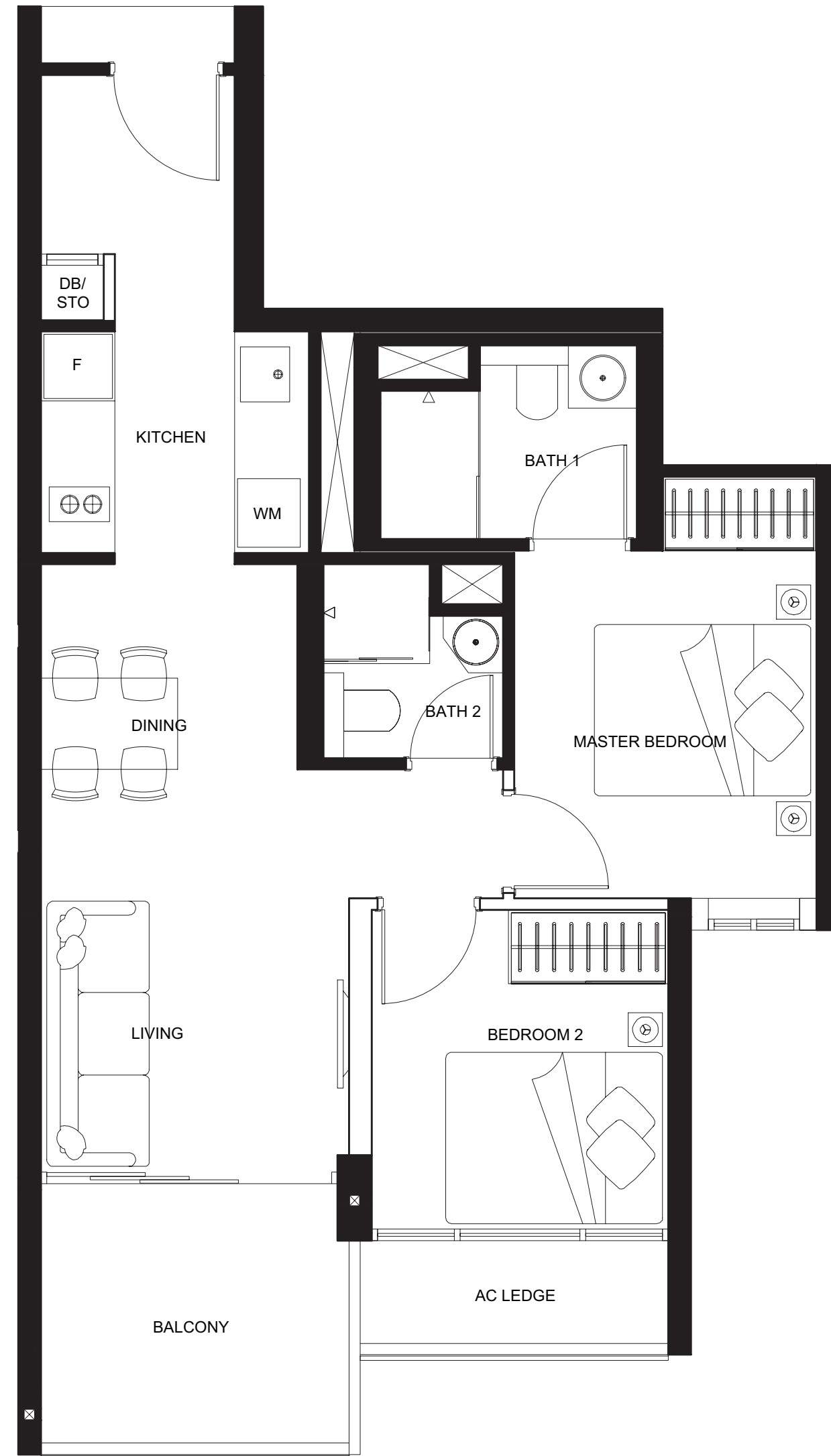
TYPE B2

#06-08 – #20-08

57M<sup>2</sup>



The above plans and illustrations are subject to changes as may be required and approved by the relevant authorities. Floor areas are approximate measurements and are subjected to final survey. The balcony shall not be enclosed unless with the approved screen. For an illustration of the approved balcony screen, please refer to the diagram annexed hereto as "annexure A".

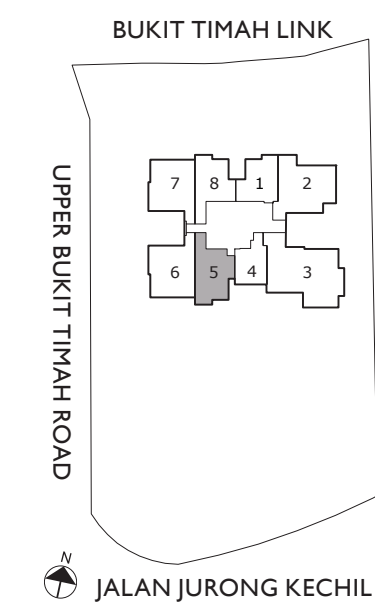


# 2 PREMIUM -BEDROOM

TYPE B3

#06-05 – #20-05

62M<sup>2</sup>



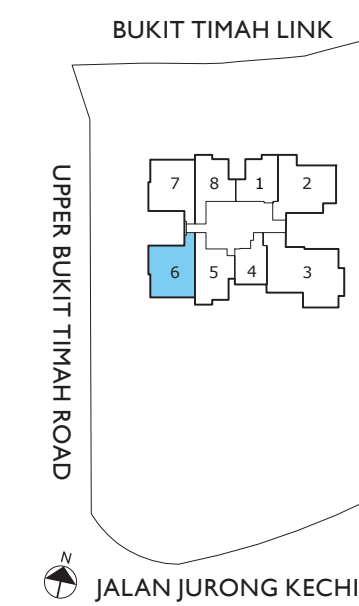


# 3-BEDROOM

TYPE C1

#06-06 – #20-06

74M<sup>2</sup>



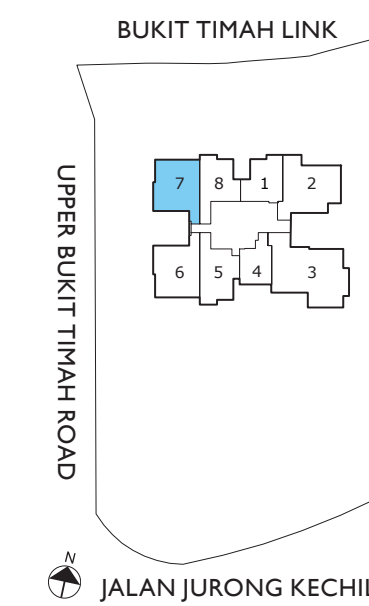


# 3-BEDROOM

TYPE C2

#06-07 - #20-07

74M<sup>2</sup>



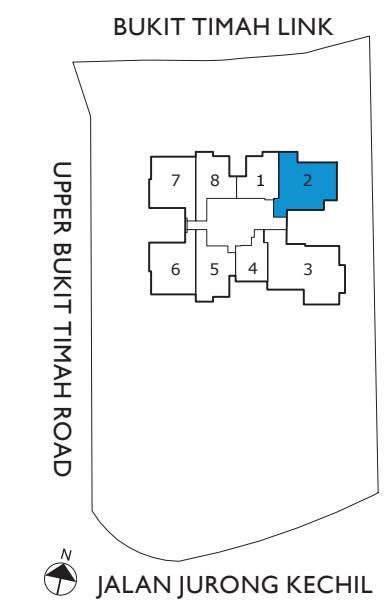


# 3 PREMIUM -BEDROOM

TYPE D

#06-02 – #20-02

89M<sup>2</sup>



The above plans and illustrations are subject to changes as may be required and approved by the relevant authorities. Floor areas are approximate measurements and are subjected to final survey. The balcony shall not be enclosed unless with the approved screen. For an illustration of the approved balcony screen, please refer to the diagram annexed hereto as "annexure A".



The above plans and illustrations are subject to changes as may be required and approved by the relevant authorities. Floor areas are approximate measurements and are subjected to final survey. The balcony shall not be enclosed unless with the approved screen. For an illustration of the approved balcony screen, please refer to the diagram annexed hereto as "annexure A".